

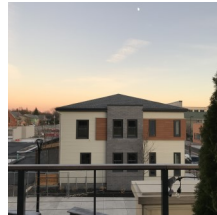
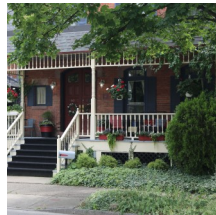
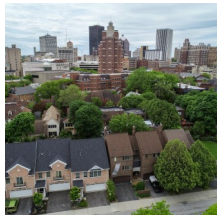
# GPA UPDATE

A PERIODIC NEWSLETTER FROM THE GROVE PLACE ASSOCIATION

VOL. 1, ISSUE 5

4.1.20

## Neighbors: We've got this!



## Stay Informed

I hope this update finds you, your friends and your family in good physical and emotional health. Our entire country has hit the pause button and it's important for all of us to abide by state directives to protect ourselves and our neighbors. Please stay updated on the latest health alerts – here are the links to the [NY State](#) and the [Monroe County Health Dept.](#) sites. Suzanne Mayer recommends this [video](#) to understand how to safely bring food and supplies into your home. Also attached are some recommendations for staying healthy approved by our very own Dr. Sandy Mayer.

GPA's March treasurer's report is attached.

## Stay Connected

We have many members of our Grove Place/ East End community who are at heightened risk of infection whose best protection is to stay isolated. For those of us that are still able to move about cautiously when necessary, let's be open to helping our neighbors who can't.

If you can help or need help, please send an email to: [gpmembership@gmail.com](mailto:gpmembership@gmail.com)

If you have received this update by a forward, please email: [gpmembership@gmail.com](mailto:gpmembership@gmail.com) to be added to the Grove Place distribution list.

## Support Local Restaurants

There are many restaurants in our neighborhood that are open limited hours for take out – and some offer delivery. Let's support them! At this time, here's some that are open with phone #s. Call first as availability is changing every day!



Bubble Fusion—200 East Avenue— 435-4770 Open for lunch and dinner take out

Cam's - Pizza - 336 East Avenue Open 11 a.m. – 9 p.m. take out and delivery

Dunkin – Coffee & Breakfast Sandwiches all Day – 111 East Avenue – 270-8246

East End Tavern – 37 Charlotte Street- 262-3988- Open 4-8

Java's Café—16 Gibbs Street— 232-4820— Bagged coffee for sale, coffee and treats

Jim's On Main – 785 East Main St. – 442-4172 – open for take out 5 AM-3 PM

Mitch's Diner – 529 E. Main Street – 7 a.m. – 3 p.m. 546-7030

Peppa Pot –Jamaican- 522 East Main Street – 11:30 a.m. - ? 546-7500

REDD – 24 Winthrop St. - 483-7333 – M-Th 12-7, Fri 12-9, Sat 4-9 PM

Stromboli's – 130 East Ave. – 546-2121- open take out and delivery

Tournedo's at the Inn on Broadway—to go Wednesday-Saturday—232-3595



The [Inner Loop North website](#) was launched today. There's a good overview of the history of the Loop, the path forward for the feasibility study and community engagement and a well done summary of the first meeting of the Community Advisory Council. Suzanne Mayer, Peter Pape, the Y's James Smith and I (Kim) are on the CAC.



Hinge Neighbors is continuing its work virtually—kudos to Suzanne Mayer for quickly learning how to manage Zoom meetings! They're also posted some videos on the [Hinge Neighbors website](#). If you have not yet taken the [Hinge survey](#) please do it now. Hinge is also collecting responses to these questions:

- If you remember Rochester before the Inner Loop was built, tell us what you remember.
- If you live near the Inner Loop North, tell us how this road plays a role in your life.
- If you use the Inner Loop North, tell us how it benefits you.

Send them to [Suzanne.Mayer@rochester.rr.com](mailto:Suzanne.Mayer@rochester.rr.com).

## Lend a Hand

[Dimitri House](#) – 325-1796 – 102 North Union Street – Food Pantry– Thanks to many of you who have reached out to support them! They still are in need of food donations, financial support and volunteers. The financial support allows them to purchase additional food from Foodlink for distribution. You can donate online. If you need assistance, have donations or want to volunteer please call first.

The [Carlson YMCA](#) is currently providing regular and emergency childcare for families in the community, including healthcare workers and first responders. A shout out to Richard Glaser who is connecting potential donors with the Y for support of this critical program. You can support this effort directly on the [Y's website](#) Our own Megan DeFranco is working to coordinate support. Any questions, please contact Megan DeFranco at 230-7520 or [megand@rochesterymca.org](mailto:megand@rochesterymca.org).

## American Red Cross

★★★★★ Yelp (2)

50 Prince St, Rochester · (585) 241-4400

The Red Cross is in desperate need of blood donations. We can walk to the Prince Street donation center. An appointment is required. Please call if you are able.

**CALLING ALL PET OWNERS AND LOVERS**– V.P. Bob Keck is compiling a directory of neighborhood pets and folks able to assist with pet care in the event of an emergency that takes the owners out of their homes. Please respond to him at [rkeck@rkeck.me](mailto:rkeck@rkeck.me).

A special **thank you** to the city crews who are out picking up trash in our neighborhoods. When you see them please be sure to let them know we appreciate their efforts. It truly makes a difference. If you see an area in need of attention call 311 as they are being assigned based on input from city residents.

## OUR CITY COUNCIL REPRESENTATIVES



Michael A. Patterson, Northeast District  
1547 North Goodman Street  
Rochester, NY 14609  
(585) 428-7538 (O); (585) 451-2024 (H)  
[Michael.Patterson@cityofrochester.gov](mailto:Michael.Patterson@cityofrochester.gov)



Mary Lupien, East District  
463 Parsells Avenue  
Rochester, NY 14609  
(585) 428-7538 (O)  
B.S. Rochester Institute of Technology  
[Mary.Lupien@cityofrochester.gov](mailto:Mary.Lupien@cityofrochester.gov)

## Get Some Fresh Air and Explore

It's amazing what you can find when you explore our beautiful city. Be sure to observe social distancing when out!



And thanks to Katherine Cove on Windsor for today's smile.



For our next update and on our Facebook page, we'd like to include photos and suggestions from you to share. Please send them to [kim@kimberlyrussell.com](mailto:kim@kimberlyrussell.com).

Stay safe. Please don't hesitate to reach out.

Kim Russell, Grove Place Association President—[kim@kimberlyrussell.com](mailto:kim@kimberlyrussell.com)

[Grove Place Website](#)

[GPA Facebook](#)

[Hinge Neighbors Website](#)